

RETAIL POWER



BATTERY CELLS

JAPAN & KOREA Cell



| Brand | | Panasonic | Panasonic | Panasonic | Panasonic | Samsung | Samsung | Samsung | Samsung |
|--------------------|------------------------|-----------|-----------|------------|-----------|--------------|--------------|--------------|--------------|
| Model | | UR18650RX | UR18650AA | NCR18650PF | NCR18650B | INR18650-15Q | ICR18650-22F | ICR18650-26H | INR18650-29E |
| Chemistry | | Li-ion | Li-ion | Li-ion | Li-ion | Li-ion | Li-ion | Li-ion | Li-ion |
| Nominal Voltage | | 3.6V | 3.6V | 3.6V | 3.6V | 3.6V | 3.6V | 3.7V | 3.7V |
| Minimum Capacity | | 1950mAh | 2150mAh | 2750mAh | 3250mAh | 1450mAh | 2100mAh | 2550mAh | 2750mAh |
| Typical Capacity | | 2050mAh | 2250mAh | 2900mAh | 3350mAh | 1500mAh | 2200mAh | 2600mAh | 2850mAh |
| Internal Impedance | | ≤ 20mΩ | ≤ 100mΩ | ≤ 35mΩ | ≤ 50mΩ | ≤ 30mΩ | ≤ 100mΩ | ≤ 100mΩ | ≤ 100mΩ |
| Charge | Method | CV/CC * | CV/CC * | CV/CC * | CV/CC * | CV/CC * | CV/CC * | CV/CC * | CV/CC * |
| | Voltage | 4.2V | 4.2V | 4.2V | 4.2V | 4.2V | 4.2V | 4.2V | 4.2V |
| | Standard Current | 1.36A | 1.50A | 1.35A | 1.62A | 0.75A | 1.1A | 1.3A | 1.37A |
| | Rapid Current | 3.9A | 2.15A | 1.35A | 3.4A | 4A | 2.2A | 2.6A | 2.75A |
| Discharge | Cut-off Voltage | 2.75V | 2.75V | 2.5V | 2.5V | 2.5V | 2.75V | 2.75V | 2.5V |
| | Continuous Current | 20A | 5A | 10A | 4.87A | 18A | 4.4A | 5.2A | 8.25A |
| | Pulse Current (5 sec.) | / | / | 18A | / | 22A | / | / | / |
| Dimensions | Diameter | Ø18.5 mm | Ø18.3 mm | Ø18.6mm | Ø18.5 mm | Ø18.15mm | Ø18.4mm | Ø18.4mm | Ø18.4 mm |
| | Heigh | 65.3mm | 64.9mm | 65.2mm | 65.3mm | 64.6mm | 65mm | 65mm | 65mm |
| Approx. Weight | | 47.5g | 42.2g | 44.5g | 47.5g | 43g | 44.5g | 45g | 45g |

* CC/CV =Constant Current & Constant Voltage

* Maximum discharge current values subject to change. Please refer to their respective specification sheets for the most updated details.

We are the Authorized Assembler of **Panasonic** and **Samsung** on high power consumption battery pack.

YLE



| YLE | YLE | YLE | YLE | YLE | YLE | YLE | YLE | Brand | |
|--------------|--------------|--------------|--------------|--------------|--------------|--------------|--------------|------------------------|------------|
| INR18650D150 | ICR18650D210 | INR18650A205 | INR18650A220 | INR18650A250 | INR18650A260 | INR18650A280 | INR18650A310 | Model | |
| Li-NMC | Li-Co | Li-NMC | Li-NMC | Li-NMC | Li-NMC | Li-NMC | Li-Co | Chemistry | |
| 3.6V | 3.7V | 3.6V | 3.6V | 3.6V | 3.6V | 3.6V | 3.8V | Nominal Voltage | |
| 1430mAh | 2000mAh | 2000mAh | 2100mAh | 2480mAh | 2530mAh | 2700mAh | 2980mAh | Minimum Capacity | |
| 1500mAh | 2100mAh | 2050mAh | 2200mAh | 2500mAh | 2600mAh | 2800mAh | 3100mAh | Typical Capacity | |
| ≤ 20mΩ | ≤ 35mΩ | ≤ 60mΩ | ≤ 65mΩ | ≤ 60mΩ | ≤ 60mΩ | ≤ 60mΩ | ≤ 60mΩ | Internal Impedance | |
| CC/CV * | CC/CV * | CC/CV * | CC/CV * | CC/CV * | CC/CV * | CC/CV * | CC/CV * | Method | Charge |
| 4.2V | 4.2V | 4.2V | 4.2V | 4.2V | 4.2V | 4.2V | 4.35V | Voltage | |
| 0.3A | 0.42A | 0.41A | 0.44A | 0.5A | 0.52A | 0.56A | 0.62A | Standard Current | |
| 1.5A | 2.1A | 1.44A | 1.76A | 1.75A | 1.82A | 1.96A | 3.1A | Rapid Current | |
| 3.0V | 3.0V | 3.0V | 3.0V | 2.75V | 2.75V | 2.75V | 2.75V | Cut-off Voltage | Discharge |
| 15A | 10A | 2.05A | 4.1A | 5A | 5.2A | 5.6A | 5A | Continuous Current | |
| 30A | 20A | 10.25A | 6.2A | 7.5A | 7.8A | 8.4A | 8A | Pulse Current (5 sec.) | |
| Ø18.3 mm | Ø18.3 mm | Ø18.3 mm | Ø18.3 mm | Ø18.3 mm | Ø18.3 mm | Ø18.3 mm | Ø18.3 mm | Diameter | Dimensions |
| 65.2mm | 65.2mm | 65.2mm | 65.2mm | 65.2mm | 65.2mm | 65.2mm | 65.2mm | Height | |
| 43g | 43g | 47g | 44g | 45g | 46g | 49g | 50g | Approx. Weight | |

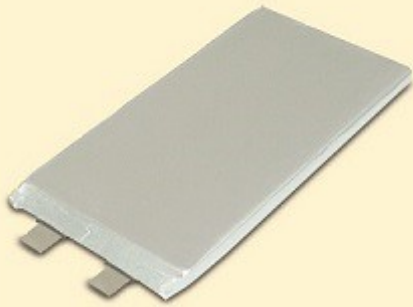
* CC/CV =Constant Current & Constant Voltage

* Maximum discharge current values subject to change. Please refer to their respective specification sheets for the most updated details.

Partnered with **YikLik Energy Limited (YLE)** battery cell manufacturer to successfully produce high-quality Li-ion and Li-polymer cells of LiCoO₂, LiNMC, LiFePO₄ chemistries which are now being used in the making of battery packs for eBike, eMotorcycle, Electric Wheelchair, Electric Golf Cart, Car Starter Battery, UPS System, Lighting, Household Appliance, Remote Control Toys, and many others.

Li-polymer Battery Cells Series

YLE



| Brand | | YLE | YLE | YLE | YLE |
|--------------------|------------------------|-----------------|-----------------|-----------------|------------------|
| Model | | INS6570138A500C | INS8570133A700D | INS0970165A900C | INS1170133A1000D |
| Chemistry | | Li-NMC | Li-NMC | Li-NMC | Li-NMC |
| Nominal Voltage | | 3.6V | 3.6V | 3.6V | 3.6V |
| Minimum Capacity | | 4800mAh | 6800mAh | 8800mAh | 9500mAh |
| Typical Capacity | | 5000mAh | 7000mAh | 9000mAh | 10000mAh |
| Internal Impedance | | ≤ 15mΩ | ≤ 25mΩ | ≤ 30mΩ | ≤ 10mΩ |
| Charge | Method | CV/CC * | CV/CC * | CV/CC * | CV/CC * |
| | Voltage | Max 4.2V | Max 4.2V | Max 4.2V | Max 4.2V |
| | Standard Current | 1A | 1.4A | 1.8A | 2A |
| | Rapid Current | 5A | 7A | 9A | 10A |
| Discharge | Cut-off Voltage | 3.0V | 2.5V | 3.0V | 2.5V |
| | Continuous Current | 15A | 35A | 27A | 50A |
| | Pulse Current (5 sec.) | 50A | 70A | 90A | 100A |
| Dimensions | Height | 6.5 mm | 8.5 mm | 9 mm | 11.3 mm |
| | Width | 73 mm | 71 mm | 73mm | 71 mm |
| | Length | 145 mm | 135 mm | 175 mm | 135 mm |
| Approx. Weight | | 50g | 160g | 210g | 215g |

* CC/CV =Constant Current & Constant Voltage

* Maximum discharge current values subject to change. Please refer to their respective specification sheets for the most updated details.

Ji-Fe Series Highly Reliable Battery Cells

YLE



| YLE | YLE | YLE | YLE | YLE | YLE | YLE | Brand |
|--------------|--------------|---------------|----------------|----------------|----------------|----------------|------------------------|
| IFR18650D110 | IFR18650D130 | IFP335774S900 | IFP287194S1000 | IFP287194S1300 | IFP337194S1200 | IFP337194S1500 | Model |
| Li-Fe | Li-Fe | Li-Fe | Li-Fe | Li-Fe | Li-Fe | Li-Fe | Chemistry |
| 3.2V | 3.2V | 3.2V | 3.2V | 3.2V | 3.2V | 3.2V | Nominal Voltage |
| 1000mAh | 1200mAh | 8500mAh | 9500mAh | 12000mAh | 11000mAh | 14000mAh | Minimum Capacity |
| 1100mAh | 1300mAh | 9000mAh | 10000mAh | 13000mAh | 12000mAh | 15000mAh | Typical Capacity |
| ≤ 25mΩ | ≤ 50mΩ | ≤ 10mΩ | ≤ 10mΩ | ≤ 10mΩ | ≤ 12mΩ | ≤ 10mΩ | Internal Impedance |
| CV/CC * | CV/CC * | CV/CC * | CV/CC * | CV/CC * | CV/CC * | CV/CC * | Method |
| Max 3.70V | Max 3.70V | Max 3.65V | Max 3.65V | Max 3.65V | Max 3.65V | Max 3.65V | Voltage |
| 0.22A | 0.26A | 1.6A | 2A | 2.6A | 2.4A | 3A | Standard Current |
| 1.1A | 1.3A | 8A | 10A | 13A | 12A | 15A | Rapid Current |
| 2.0V | 2.0V | 2.0V | 2.0V | 2.0V | 2.0V | 2.0V | Cut-off Voltage |
| 16.5A | 3.9A | 24A | 50A* | 39A | 60A* | 45A | Continuous Current |
| 40A | 13A | 80A | 100A | 65A | 120A | 75A | Pulse Current (5 sec.) |
| / | / | 33 mm | 28 mm | 28 mm | 33 mm | 33 mm | Height |
| Ø18.3 mm | Ø18.3 mm | 57 mm | 71 mm | 71 mm | 71 mm | 71 mm | Width |
| 65.3 mm | 65.2mm | 74mm | 94 mm | 94 mm | 94 mm | 94mm | Length |
| 42g | 45g | 350g | 400g | 410g | 460g | 480g | Approx. Weight |

* CC/CV =Constant Current & Constant Voltage

* Recommend screw connect method if the constant discharge current is more than 30A

* Maximum discharge current values subject to change. Please refer to their respective specification sheets for the most updated details.